

USER MANUAL AND SAFETY DATASHEET

KKSB Case for Raspberry Pi 5 Touch Display 2 - Desktop Orientation

EAN:7350001162058

Read before use

This document contains important technical and safety information about the device, and its safety use and installation

⚠ WARNINGS! WARNING: CHOKING HAZARD-SMALL PARTS. NOT FOR CHILDREN UNDER 3 YEARS

Product Introduction

Designed specifically for the Raspberry Pi 5 and the official Raspberry Pi Touch Display 2, this case ensures a secure and precise fit, protecting your components while maintaining a compact design. It features four sturdy feet, allowing it to sit securely on desks, counters, or tabletops, making it an excellent choice for point-of-sale systems, reception displays, or smart home dashboards. Additionally, the case includes a convenient external start button, enabling effortless power control without opening the enclosure.

Note: Electronics, HATs, and Cooler/Heatsink are NOT included.

Detailed Product Information



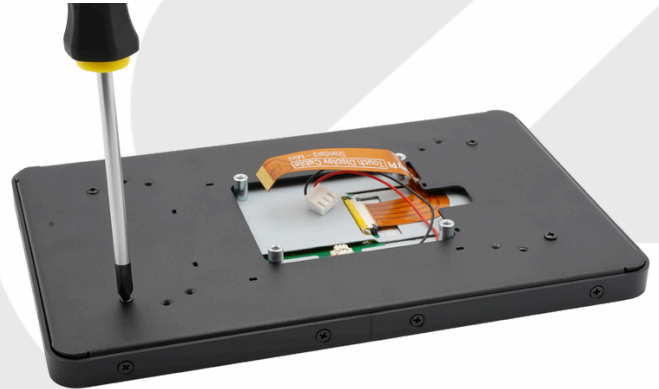
<https://kksb-cases.com/products/kksb-case-for-raspberry-pi-5-touch-display-2-desktop-orientation>



How to Assamble The KKSB Cases



<https://kksb-cases.com/pages/assembly-instruction-kksb-case-for-raspberry-pi-5-touch-display-v2-low-profile>



Standards for Inclusion: RoHS Directive

This product meets the requirements of the RoHS Directive (2011/65/EU and 2015/863/EU) and the UK RoHS Regulations (S.I. 2012:3032).

Disposal and Recycling

To protect the environment and human health, and to conserve natural resources, it is important that you dispose of the KKSB Cases responsibly. While this product does not contain electromechanical components, proper disposal is still essential to minimize environmental impact.

- Do not dispose of the KKSB Cases as unsorted municipal waste.
- Take the case to recycling facilities that accept metal or plastic materials and can properly process the case.
- Do not incinerate or dispose the module in regular household waste.

By adhering to these disposal and recycling guidelines, you can help ensure that the KKSB Cases is disposed of in an environmentally responsible manner.

⚠ WARNING! Any changes or modifications not expressly approved by the party responsible for compliance could void the user's authority to operate the equipment.

Manufacturer: KKSB Cases AB

Brand: KKSB Cases

Address: Hjulmakarevägen 9, 443 41 Gråbo, Sweden

Tel: +46 76 004 69 04

E-mail: support@kksb.se

Official website: <https://kksb-cases.com/>

Changes in the contact information data are published by the manufacturer on the official website.